

1) CONSTRUCTION:		NOM. DIA.
CONDUCTOR:	26 AWG 7/34 STRANDED TINNED COPPER	.019"
INSULATION:	HIGH DENSITY POLYETHYLENE, .010" NOM. WALL THICKNESS	.039" MAX.
PAIRS:	COLOR CODED SINGLES TWISTED INTO PAIRS	.078"
CABLE:	(4) TWISTED PAIRS TWISTED TOGETHER AND WRAPPED WITH A CLEAR POLYESTER BINDER TO FORM A CABLE CORE	.170"
SHIELD:	AN ALUMINIZED POLYESTER FOIL SHIELD (FOIL IN, 100% COVERAGE) WITH A 26 AWG STRANDED TINNED COPPER DRAIN WIRE IN CONTACT WITH METALIZED SURFACE SHALL BE APPLIED OVER THE CABLE CORE.	.176"
JACKET:	POLYURETHANE, (COLOR, PER CHART 1), .022" NOM. WALL THICKNESS (PRESSURE)	.220" NOM. .227" MAX. (BY PI TAPE)
	OVERALL CABLE DIAMETER	

- 2) PHYSICAL PROPERTIES:
- TEMPERATURE RATING, MAX. 75°C
 - TEMPERATURE RATING, MIN. -40°C
 - WT./M', NOM., NET. 22.7 LBS.
 - UV RESISTANT JACKET
- CHART 1:

QUABBIN P/N	JACKET COLOR
5710	BLACK
5711	BLUE
5712	TEAL

- 3) ELECTRICAL CHARACTERISTICS:
SEE PAGE 2

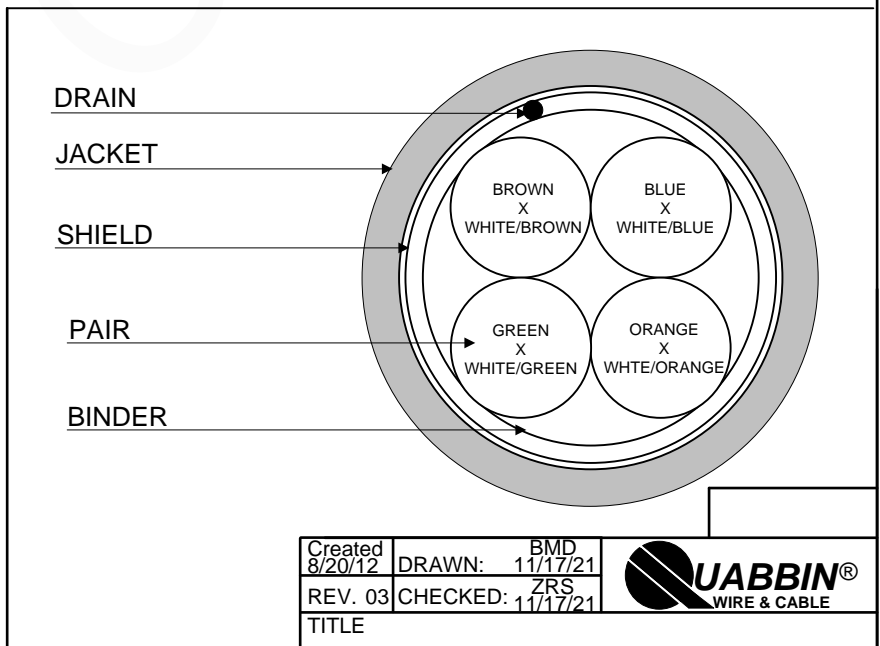
- 4) AGENCY APPROVALS:
EU CE MARK: MEETS EU DIRECTIVE 2011/65/EU (RoHS II)

- 5) APPLICATION:
SHIELDED FLEXIBLE PATCH/JUMPER CABLE TO SUPPORT SCREENED ISO 11801 CLASS D AND SCREENED 568-C.2 CATEGORY 5e APPLICATIONS.

- 6) PRINT: (WHITE INK ON BLACK JACKET, ALL OTHERS BLACK INK)
QUABBIN DATAMAX EXTREME DURABLE INDUSTRIAL ETHERNET PATCH CORD CAT 5e F/UTP P/N (**QWC P/N PER CHART 1**) -- CE RoHS -- (**LOT DESIGNATOR**) (**SEQUENTIAL FOOTAGE**)

- 7) COLOR CODE:
1. BLUE X WHITE/BLUE
 2. ORANGE X WHITE/ORANGE
 3. GREEN X WHITE/GREEN
 4. BROWN X WHITE/BROWN

- 8) PACKAGING:
TO BE PACKAGED AS PER QWC'S STANDARD PACKAGING



Created 8/20/12	DRAWN: BMD 11/17/21	
REV. 03	CHECKED: ZRS 11/17/21	
TITLE DATAMAX EXTREME DURABLE INDUSTRIAL ETHERNET PATCH CABLE – 4 PR SCREENED		
DRAWING #	QWC0042	1 of 2

CUSTOMER APPROVAL: _____ DATE: _____

3) ELECTRICAL CHARACTERISTICS:


POE COMPLIANT TO 68 METERS WHEN INSTALLED PER RECOMMENDATIONS IN TIA TSB-184
 CABLE WILL MEET CAT 5e CHANNEL REQUIREMENTS TO 68 METER LENGTH
 CAPACITANCE, MUTUAL, NOM. 13.5 PF/FT AT 1 MHz
 DIELECTRIC WITHSTANDING, MIN. 1500V RMS
 VOLTAGE RATING, MAX. 300V
 D.C. RESISTANCE, MAX. 42.6 Ω/1000'

NOTE: TESTING FOR THE FOLLOWING IS CONDUCTED OFF THE REEL. (FOR 100m OF CABLE)

IMPEDANCE	100+/- 15 Ω 1-100 MHz	
RETURN LOSS	1 ≤ f < 10 MHz	20 + 5 LOG(f) dB MIN
	10 ≤ f < 20 MHz	25 dB MIN
	20 ≤ f ≤ 100 MHz	25 - 8.6 LOG(f/20) dB MIN
PS NEXT	1 ≤ f ≤ 100 MHz	32.3 - 15 LOG(f/100) dB MIN
NEXT	1 ≤ f ≤ 100 MHz	35.3 - 15 LOG(f/100) dB MIN
PSACRF	1 ≤ f ≤ 100 MHz	20.8 - 20 LOG(f/100) dB MIN
ACRF	1 ≤ f ≤ 100 MHz	23.8 - 20 LOG(f/100) dB MIN
INSERTION LOSS	1 ≤ f ≤ 100 MHz	1.5[1.967 √f + 0.023(f) + 0.050/√f] dB MAX
DELAY	1 ≤ f ≤ 100 MHz	534 + 36/√f ns MAX
DELAY SKEW	1 ≤ f ≤ 100 MHz	< 25ns
LCL	1 ≤ f ≤ 100 MHz	-38dB MIN
VELOCITY OF PROPAGATION	68%	

CUSTOMER APPROVAL:

DATE:

Created 8/20/12	DRAWN: BMD 11/17/21	
REV. 03	CHECKED: ZRS 11/17/21	
TITLE DATAMAX EXTREME DURABLE INDUSTRIAL ETHERNET PATCH CABLE – 4 PR SCREENED		
DRAWING #	QWC0042	2 of 2